

---

# COMPANY PROFILE

---

## MODERN ENGINEERING Co. GENERAL CONTRACTING

---

### WHY US?

We will make your construction project a stress-free and enjoyable process, through detailed planning and proactive communication.

Whatever your industrial needs, Modern Engineering is fully trained and equipped to handle it. We offer far more than most of construction companies. Our goal is to provide our customers and our employees with individual attention and an atmosphere of comfort and trust before, during, and after each job. We are fully licensed, bonded and insured mechanical contractor. Quality and customer service comes first. Our manpower are experienced, professional, energetic, and courteous

## List of Content

- 1- About us
- 2- Vision
- 3- Mission
- 4- Our policy
- 5- Our team
- 6- Organization Chart
- 7- Contact Us

## 1- About us

Modern Engineering Co. is a full service general construction company that specializes in the welding fabrication and field welding and erection of flowlines, pipelines and piping. We have extensive experience with all grades of carbon steel, stainless steel, clad and nickel alloy materials.

When we are a part of the construction team we bring with us years of experience and technical skills on and off site.

Our objective is to provide our clients with a professional and low stress experience when we are chosen to execute their projects. Our emphasis on clear communication and follow-through procedures ensures that the client's objectives are top priority in the planning and execution of all our processes.

Modern Engineering has the capability of shop or field welding with the Shielded Metal Arc Welding (SMAW), Gas Metal Arc Welding (GMAW), Submerged Arc Welding (SAW), Flux Cored Arc Welding (FCAW), and Gas Tungsten Arc Welding (GTAW) processes.

Modern Engineering has welding procedures qualified to Section IX, of the ASME Boiler and Pressure Vessel Code. These procedures include, but are not limited to, the following materials:

Carbon Steel

Austenitic Stainless Steel

Chromium-Molybdenum Steel

Nickel-Copper Alloy

Duplex Stainless Steels etc..

Our shop and field welders are qualified to Section IX, of the ASME Boiler and Pressure vessel Code. These knowledgeable personnel have the experience necessary, and are capable of working to codes such as API, AWWA, NFPA, and ASME.

## 2- Vision Statement

To be the preferred contractor of choice. A company that our customers want to work with and our employees are proud to work for.

## 3- Mission Statement

Modern Engineering Company is a leader in providing value-added construction services to our customers by creating a successful partnership with them throughout the construction process. Our pledge is to establish lasting relationships with our customers by exceeding their expectations and gaining their trust through exceptional performance by every member of the construction team

## 4- Our policy

### Occupational Health and Safety Policy

We maintain high standards of safety and care is taken to educate our teams on the hazards of construction. The monitoring of personnel is taken seriously and all efforts are made to keep the working environment safe. All personnel are issued with safety equipment, and should an accident occur, work is stopped immediately, management is informed and the necessary action is taken without any delay. Management takes the health and safety policy as their participative responsibility along with continued education and awareness being maintained. The working conditions

are fair and the health of the work force is always considered in planning and executing a work plan

## **Environmental Policy**

Modern Engineering is committed to reducing its impact on the environment. We will strive to improve our environmental performance over time and to initiate additional projects and activities that will further reduce our impacts on the environment. Our commitment to the environment extends to our customers, our staff, and the community in which we operate.

We are committed to:

Comply with all applicable environmental regulations;

Prevent pollution whenever possible;

Train all of our staff on our environmental program and empower them to contribute and participate;

Communicate our environmental commitment and efforts to our customers, staff, and our community; and

Continually improve over time by striving to measure our environmental impacts and by setting goals to reduce these impacts each year.

## 5- Our team

Our people are crucial in the delivery of our services and solution to our clients. In order to ensure that everyone is equipped with the right skill, knowledge and attitude, a comprehensive training program is put in place to constantly upgrade their technical and management skills. We firmly believe in providing the right training certification and practical knowledge to our people, in order for them to execute their duties and responsibilities confidently and consistently. Our aim is to stay relevant to the ever changing market place and effectively meet our client's requirement.



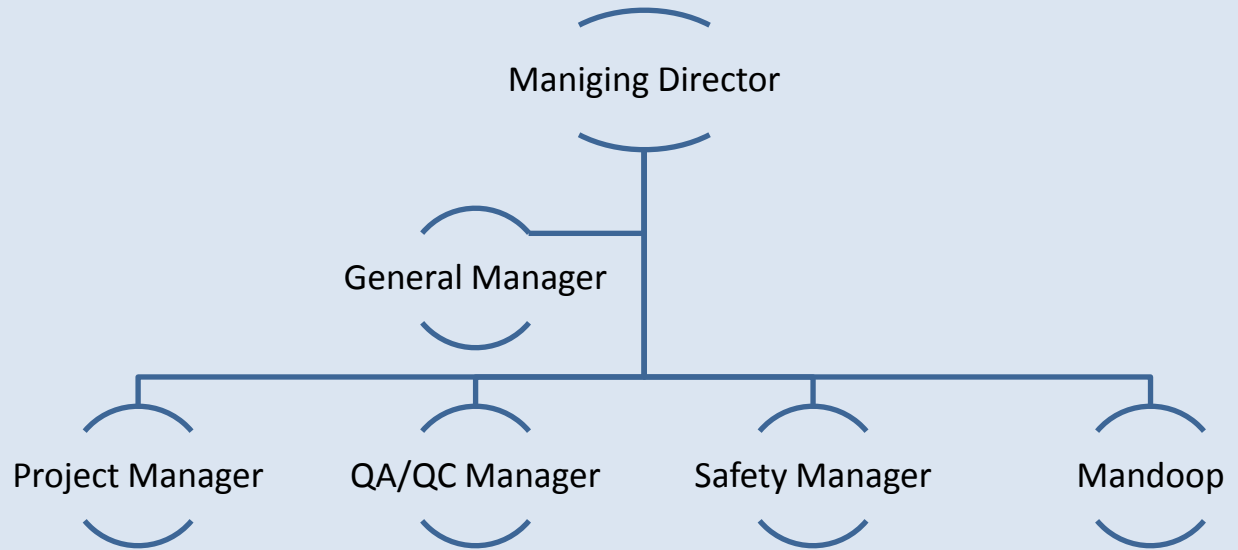








## 6- Organization Chart



Manpower List

Sr. No.	Category	Remarks
1	Supervisor	
2	Welding Foreman	
3	Fabricator	
4	Fitter	
5	Welder	
6	Grinder	
7	Helper	
8	Equipment Operator	
9	Safety Officer	
10	Time Keeper	
11	QC Technician	

Equipment List

Sr. No.	Equipment Type	Remarks
1	Welding Machine	
2	Tool Carrier	
3	Boom Truck	
4	Pick-up	
5	Bus	
6	Diesel Tanker	
7	SUV vehicle	

## 7- Contact Us

Our office address as below